

# BMP1-7-27-5F

2G/3G/4G Bumper Mount Antenna

01/04/2016 V2

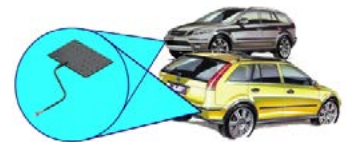


## BMP1-7-27-5F

- Covert application
- Robust over moulded construction
- Designed to mount in vehicle bumper / fender

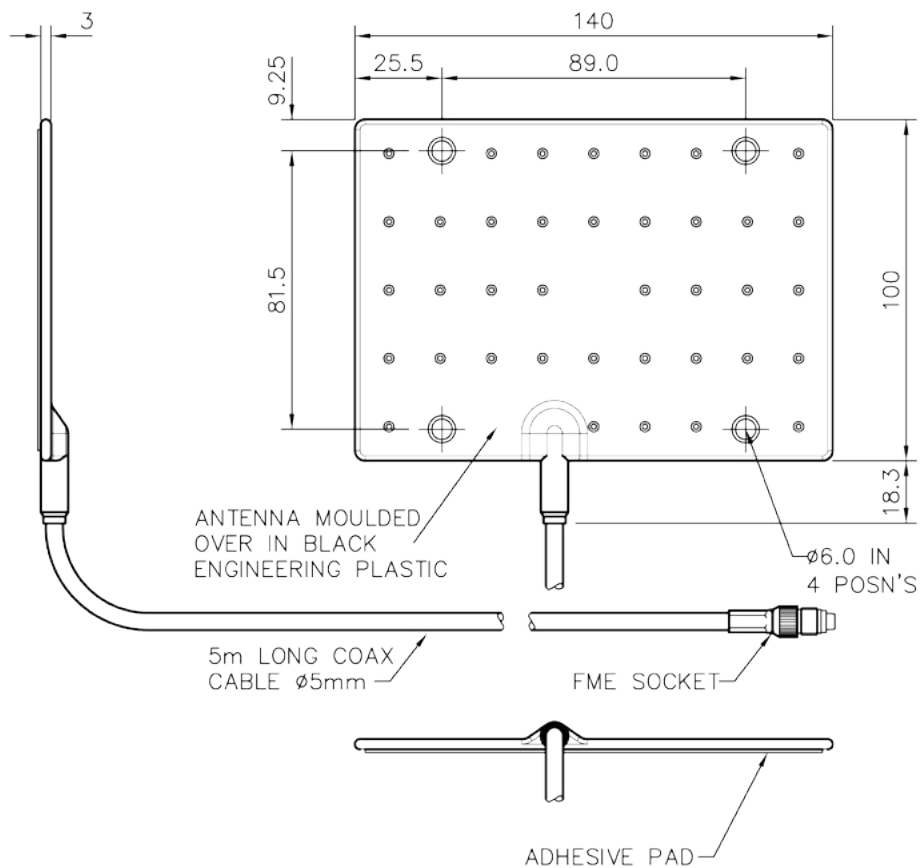
The Panorama Bumper Mount Antenna is designed for covert operations and other applications which require a vehicle antenna that is effectively invisible.

Mounted in the vehicle's bumper, installation requires no drilling and is invisible from the outside of the car.

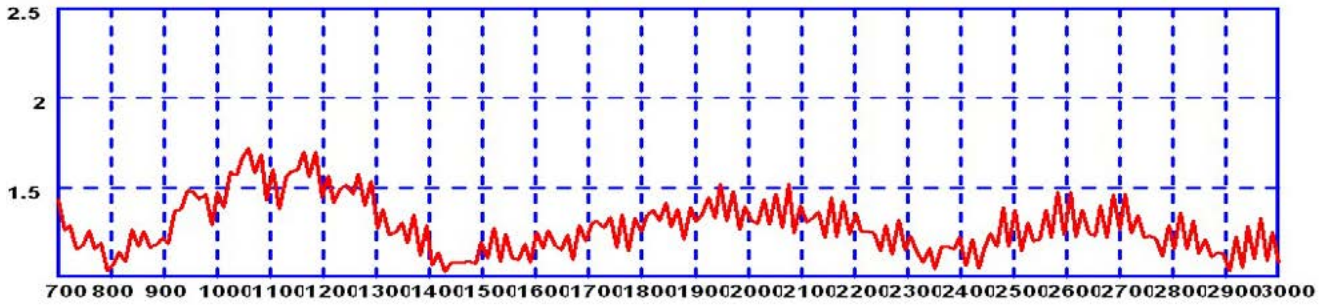


Antenna positioning

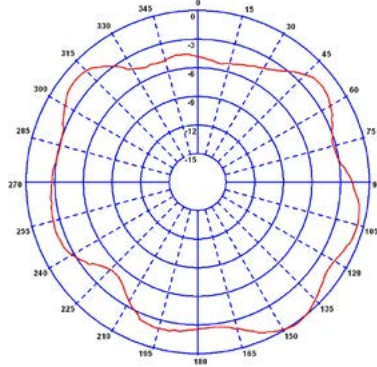
### Technical Drawing



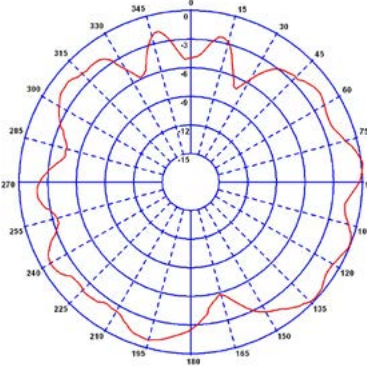
## Typical VSWR\*



Typical H-Plane\* (900MHz)



Typical H-Plane\* (1800MHz)



\* All electrical measurements taken in free space with 5m (17') of cable. Exact installed position in bumper will affect patterns and VSWR response.

<b>Part No.</b>		BMP1-7-27-5F
<b>Electrical Data</b>		
Frequency Range (MHz)	698-960 / 1300-2700	
Peak Gain: Isotropic	2dBi (in free space)	
Compared to ¼ wave	0dB (in free space)	
Typical VSWR	≤2.5:1	
Polarisation	Vertical	
Pattern	Omni-directional (in free space)	
Impedance	50Ω	
Max Input Power (W)	25	
<b>Mechanical Data</b>		
Dimensions (mm)	Length	140 (5.51")
	Width	100 (3.94")
	Thickness	4 (0.16") (including adhesive pad)
Operating Temp (°C)	-40° / +80°C ( -40° / 176°F )	
Material	TPE	
Colour	Black	
<b>Mounting Data</b>		
Fixing	Adhesive pad & 4 × fixing holes	
<b>Cable Data</b>		
Type	CS29	
Diameter (mm)	5 (0.2")	
Length (m)	5 (16')	
Termination	FME Socket	



**Panorama Antennas Ltd**  
Frogmore, London, SW18 1HF, United Kingdom

T: +44 (0)20 8877 4444  
F: +44 (0)20 8877 4477

E: sales@panorama-antennas.com  
www.panorama-antennas.com

Waiver: The data given above is indicative of the performance of the product/s under particular conditions and does not imply a guarantee of performance. These specifications are subject to change without notice.

Copyright © Panorama Antennas Ltd. All rights reserved.